





# [ 신한 SOL Pay 23-24 핸드볼 H리그(일반부) ]

**Shot Distribution**

2024. 01. 06 16:00 광명시민체육관

Referees : 정진영 / 박현진  
 Technical officer : 남은영 / 장면호  
 MVP : 12. 정진희(서울시청)

서울시청                      34                      16 : 6                      24                      부산시설공단

## 부산시설공단

Players

Goals / Shots

<b>7. 신진미</b> 2/3   1/1   1/1 1/1   0/0   0/0 0/2   1/1   0/0	<b>9. 정가희</b> 0/0   0/0   1/1 0/0   0/0   0/1 1/2   0/1   1/2 Missed: 2   Post: 1	<b>10. 송해리</b> 1/1   0/0   0/0 0/0   0/1   0/0 1/1   0/0   2/2	<b>14. 황수미</b> 0/0   0/0   0/0 0/0   0/0   0/0 0/0   0/0   0/0	<b>17. 김진이</b> 0/0   0/0   0/0 0/0   0/0   0/0 0/0   0/0   0/0
<b>18. 문수현</b> 0/0   0/0   0/0 0/0   0/0   0/0 0/0   0/0   0/0	<b>19. 김다영</b> 0/0   0/0   0/0 0/0   0/0   0/0 0/0   0/0   0/0	<b>39. 이혜원</b> 0/0   0/0   0/0 0/0   0/0   0/0 0/0   0/0   0/1 Missed: 2	<b>74. 이주현</b> 0/0   0/0   0/0 0/0   0/0   0/0 0/0   0/0   0/0	<b>77. 박시연</b> 0/0   0/0   1/2 1/1   0/0   0/0 0/0   0/0   0/0 Post: 1
<b>86. 김수연</b> 0/0   0/0   0/0 0/0   0/0   0/0 0/0   0/0   0/0	<b>88. 최유나</b> 0/0   0/0   0/0 0/0   0/0   0/0 0/0   0/0   0/0	<b>91. 이지우</b> 0/0   0/0   0/0 0/0   0/0   0/0 0/0   0/0   0/0	<b>96. 코스타조아나</b> 0/2   0/0   0/0 0/0   0/1   0/0 1/1   0/0   0/0 Missed: 1   Blocked: 1	<b>99. 몰토바알리나</b> 1/1   0/0   3/3 1/1   0/1   0/0 0/1   1/1   2/2 Blocked: 2

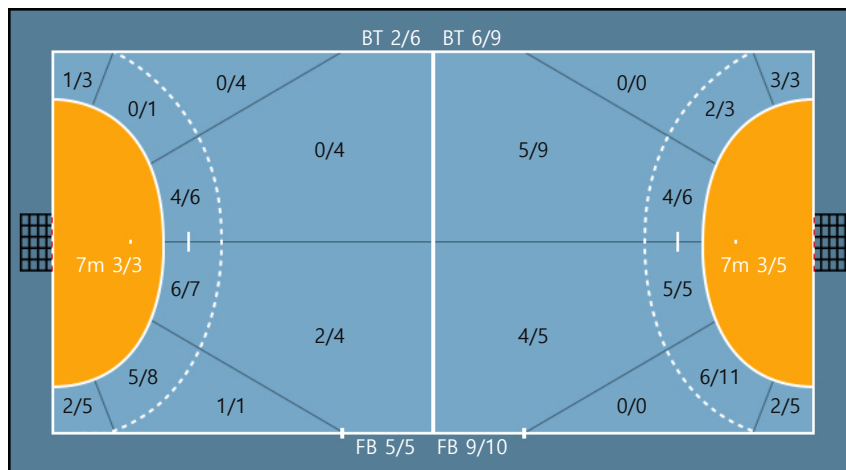
Team

Goals / Shots

Team	BT	FB	7m
4/7	1/1	6/7	
3/3	0/3	0/1	
3/7	2/3	5/7	

Missed: 5   Post: 2   Blocked: 3

## Offense



## Defense

Goalkeepers

Goals / Shots

<b>86. 김수연</b> 2/4   0/0   6/7 1/3   0/0   3/5 7/8   3/4   4/7	<b>88. 최유나</b> 0/0   0/0   1/1 0/0   0/0   1/1 3/3   1/1   2/3
---	---

2Min	2 Minute Suspensions	AS	Assists	BS	Block Shots	BT	Breakthroughs	RB	Rebound
DR	Disqualification with report	RC	Red cards	FB	Fast Breaks	G/S	Goals/Shots	BD	Blocked
S/S	Saves/Shots	YC	Yellow cards	ST	Steals	TF	Technical Faults	%	Efficiency



# [ 신한 SOL Pay 23-24 핸드볼 H리그(일반부) ]

Play by Play

2024. 01. 06 16:00 광명시민체육관

Referees : 정진영 / 박현진

Technical officer : 남은영 / 장면호

MVP : 12. 정진희(서울시청)

서울시청

34

16 : 6  
18 : 18

24

부산시설공단